



Kineton CE Primary School

Class plan - Year 1 Cycle A



Childhood History

Companions

- Mixing Colours (Art and design)
- Our Wonderful World (Geography)
- Shade and Shelter (Design and technology)
- Funny Faces and Fabulous Features (Art and design)
- Everyday Materials (Science)
- Human Senses (Science)

Term

Autumn

Key Texts

Colour Monster- Anna LLenas That Rabbit Belongs to Emily Brown by Cressida Cowell & Neal Layton Paper Dolls- Julia Donaldson A Street through Time- Steve Noon Traction Man - Mini Grey

Additional texts

Here We Are - Oliver Jeffers

Memorable experience (trips, visitor, fieldwork)

Trip to St Johns Meet a fireman Visit a care home

Innovate challenge

Create a Museum

English - Genres

Colour Monster- Story to entertain. Traction Man - comic strip to entertain. Little Red Riding Hood- Wanted poster to inform & retell the story The Rabbit who Belongs to Emily Brown- adventure story Beegu- Character description, setting description, postcard Instructions- how to care for a baby Beegu Recount of trip (ed verb endings) Invitation to the nativity

English - punctuation

Finger spaces Capital letters formation Sentence demarcation Nouns Adjectives Verbs - ed and ing endings. (suffixes) Capital letters for Proper nouns. Exclamation marks

Art and design

[Mix It (Y1)] - Colour theory; Colour wheel; Primary and secondary colours. [Funny Faces and Fabulous Features] - Portraiture; Collage

Computing

Self image and Identity Online relationships

Design and technology

[Shade and Shelter] - Investigating existing products; Designing and making shelters and dens; Prototypes; Safety rules; Materials. [Funny Faces and Fabulous Features] - Stitching to join materials; Embellishing

Geography

Settlements; Changes over time. [Our Wonderful World] - Physical and human features; Picture maps; Cardinal compass points; Equator and hemispheres; Continents; Oceans; Countries and capital cities of the UK; Protecting natural environments; Fieldwork

History

Historical vocabulary; Historical artefacts; Timelines; Everyday life and childhood in the 1950s; Significant events – Queen's coronation; Enquiry

Music

My Musical Heartbeat Dance, Sing and Play Christmas production

PSHE

Stages of life; Changes Physical health and wellbeing- fun times Taking care project

PE

Gymnastics -Traditional Tales Multi Skills - Throwing and Catching Dance- Seasons Multi Skills - Bat and Ball

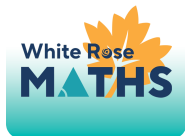
RE

What do Christians believe God is like? Why does Christmas matter?

Science

[Shade and Shelter] - Naming everyday materials; Properties and uses of materials. [Everyday Materials] - Materials; Natural materials; Human-made materials; Grouping materials; Properties of materials; Venn diagrams; Comparing and testing materials; Working scientifically – Identifying and classifying, Observing changes over time, Comparative test, Pattern seeking, Research. [Human Senses] - Humans; Labelling body parts; Counting body parts; Similarities and differences in humans; Five senses – sight, hearing, touch, smell, taste; Senses and danger; Sensory loss and assistive tools; Sense of touch investigation; Working scientifically – Identifying and classifying, Comparative test, Pattern seeking, Research

Y1 WRM – Autumn (v3.0) **Mathematics**



Mathematics

Block 1: Number – Place value – Numbers to 10; Block 2: Number – Addition and subtraction – Addition, Subtraction, Problems (Addition and Subtraction); Block 3: Geometry – Shape, Pattern and Symmetry



Bright Lights, Big City **Geography**

Companions

- Rain and Sunrays **Art and design**

Term

Spring

Key Texts

The Queen's Hat- Steve Antony Dear Earth - Isabel Otter Paddington- Michael Bond The Big Book of the UK - Imogen Russell Williams

Additional texts

Topsy and Tim Visit London – Jean and Gareth Adamson

Memorable experience (trips, visitor,fieldwork)

Local landmarks Post a letter

Innovate challenge

Marley's trip to London

English - Genres

Inform - Letter to the King Entertain - The Queen's hat - retell the story Create 'The King's hat' an alternative story. Non Chronological report- (London landmarks guidebook page) Poetry Samuel Pepys diary entry

English - punctuation

Question marks vs statements Conjunctions- and/ because Adjectives Capital letters for Proper Nouns Capital letter for

Art and design

Drawing

Computing

Online bullying Copyright and ownership/privacy and security

Geography

Local landmarks; Countries and capital cities of the UK; Physical features of the UK; Settlements; Human features; Weather and seasons; London – a capital city; Landmarks; Aerial images; Maps; Directions – locational and directional language; Geographical similarities and differences

History

Significant event – Great Fire of London

Music

Exploring Sounds Learning to Listen

PSHE

Speaking, listening and sharing Identify, society and equality- me and others Drug, alcohol and tobacco education- What do we put in to and on to our bodies?

PE

Dance -Starry Skies Multi skills -Attacking and Defending Gymnastics -Animals Forest School

RE

How might your worldview be seen in the choices you make? Why does Easter matter?



Taxi! **Design and technology**

Memorable experience (trips, visitor, fieldwork)

Investigating wheels, axles and chassis

Innovate challenge

Making a London taxi

Design and technology

Mechanisms – wheels, axles and chassis



Seasonal Changes **Science**

Innovate challenge

Let's investigate focus: Asking and answering questions

Computing

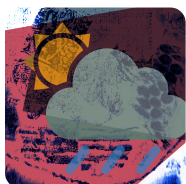
Managing online information Health, wellbeing and lifestyle

RE

How do people with similar worldviews share and celebrate their beliefs? What is the good news that Jesus brings?

Science

Seasons; Seasonal changes in deciduous and evergreen trees; Seasonal changes in animals; Weather; Seasonal weather; Day length; Investigating the Sun; Measuring wind; Measuring temperature; Measuring precipitation; Weather forecasting; Working scientifically – Observing changes over time, Identifying and classifying, Pattern seeking, Comparative test, Research



Rain and Sunrays **Art and design**

Memorable experience (trips, visitor, fieldwork)

Weather motifs

Innovate challenge

Creating weather collagraphs

Art and design

Motifs; Line and shape; Texture; Collagraphy



School Days **History**

Companions

- o Street View **Art and design**
- o Chop, Slice and Mash **Design and technology**
- o Plant Parts **Science**
- o Animal Parts **Science**

Term

Summer

Key Texts

The Owl who is afraid of the dark The Tiger who Came to Tea - Judith Kerr Beegu- Alexis Deacon Meerkat Mail - Emily Gravett

Additional texts

Whiffy Wilson: The Wolf who wouldn't go to school – Caryl Hart

Memorable experience (trips, visitor,fieldwork)

Cotswold Wildlife Park Visit

Innovate challenge

Planning a class assembly about similarities and differences between Victorian schools and schools today

English - Genres

Non Fiction text explaining what our school is like The Owl who is afraid of the dark- alternative version Poetry Recipe The Tiger who came to tea- wanted poster- to inform Alternative version Meerkat mail- Meerkat non chronological report Postcards Retelling the story.

English - punctuation

Capital letters for the start of sentences Demarcating sentences correctly and editing for them. Noun phrases

Art and design

[Street View] - 3-D murals; Buildings; Significant people – James Rizzi

Design and technology

[Chop, Slice and Mash] - Sources of food; Food preparation techniques; Hygiene rules; Designing and making salads and sandwiches

Geography

Fieldwork; Human and physical features; Maps; Local environment; Changes over time

History

Historical vocabulary; Historical artefacts; Timelines; Present day schools; Our school; Victorian era; Victorian schools; Significant people – Samuel Wilderspin

Music

Having fun with improvisation Let's perform together

PSHE

Special people; Positive contributions Mental Health and wellbeing - feelings My feelings, friends and family

PE

Swimming Multi skills -Running and jumping

Science

[Plant Parts] - Wild and garden plants; Seasonal changes; Plant parts; Seeds and bulbs; Investigating leaves; Importance of plants; Working scientifically – Identifying and classifying, Observing changes over time, Pattern seeking, Research, Comparative test. [Animal Parts] - Animals' body parts; Animal groups – amphibians, birds, fish, invertebrates, mammals, reptiles; Carroll and Venn diagrams; Pets; Carnivores, herbivores and omnivores; Earthworms; Working scientifically – Identifying and classifying, Comparative test, Pattern seeking, Research



Y1 Computing **Computing**

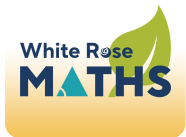
Computing

Staying safe online; Algorithms; Programming and debugging; Using data

Y1 WRM – Summer (v3.0) **Mathematics**



Y1 WRM – Spring (v3.0) **Mathematics**



Staying safe online; Algorithms; Programming and debugging; Using data